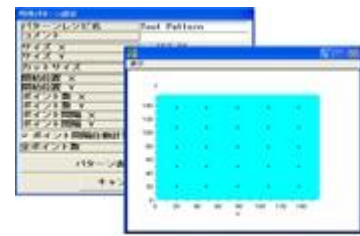
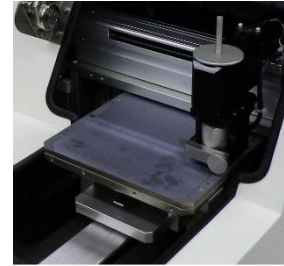


Model : RG-200PV

Semi-automatic 4 point probe sheet resistance/resistivity measurement system



High speed measurement system for Square shape sample

Multi point measurement(Programmable & Random) & 2-D/3-D mapping

Features

- Multi-points measurement and Mapping display
 - 2-D map / 3-D map graphic display
 - Multipoint pattern measurement is programmed and random pattern is programmable by operator.
- Measurement data base link with Excel via CSV format file
- Complies with the following ASTM & JIS
 - <JIS> JIS H 0602-1995, JIS K 7194-1994
 - <ASTM> ASTM F 84-99(SEMI MF84), ASTM F 374-00a, ASTM F 390-11, ASTM F 1529-97
- [Option] PN checker function
Leak current test function
Transfer robot function

Applications

- Semiconductor materials, Solar-cell materials (Silicon, Polysilicon, SiC etc)
- New materials, functional materials (Carbon nanotube, DLC, graphene, Ag nanowire etc)
- Conductive thin film (Metal, ITO etc)
- Diffused sample (or layer)
- Silicon-related epitaxial materials, Ion-implantation sample
- Others (*Please contact us for details)

Sample Sizes

<Square> Max 156 x 156mm
<Circle> Max 6inch
Thickness : Max 3mm

A global leading company for resistivity measurement system.



Measurement Range

Test Item	Measurement Range
V/I Ratio	0.100m ~ 3.000M ohm
Sheet resistance	1.00m ~ 10.00M ohm/sq
Resistivity (Layer : 1.000 ~ 99.99μm)	1.00μ ~ 10.00k ohm.cm
Resistivity (Slice : 100.0 ~ 999.9μm)	0.100m ~ 100.0k ohm.cm

Measurement Accuracy / Repeatability

Measurement Accuracy	Measurement Repeatability
%BIAS < ±1%	CV ≤ 0.7%
$\%BIAS = \frac{\bar{X} - NIST\text{guaranteedvalue}}{NIST\text{guaranteedvalue}} \times 100[\%]$ <p>\bar{X} ----- Average of same point x 10times measurement(23°C)</p>	$CV = \frac{\sigma}{\bar{X}} \times 100[\%]$ <p>σ ----- Standard deviation of same point x 10times measurement(23°C) \bar{X} ----- Average of same point x 10times measurement(23°C)</p>

Throughput (Tact time)

Points	Tact time
1	6 sec (±3sec)
5	12 sec (±3sec)
9	18 sec (±3sec)
25	42 sec (±3sec)
36	58 sec (±3sec)

*Throughput will change by setting conditions, resistance value and the sample surface state.

Dimension / Weight / Power supply

<Dimension, Weight> Mainbody : W400 × D600 × H325mm, 35kg

<Power supply> AC100V±10%, 50/60Hz, 100VA

*Please contact us for more details.

*The customers are always welcome to do Demo measurement.

*Specification subject to change without notice.